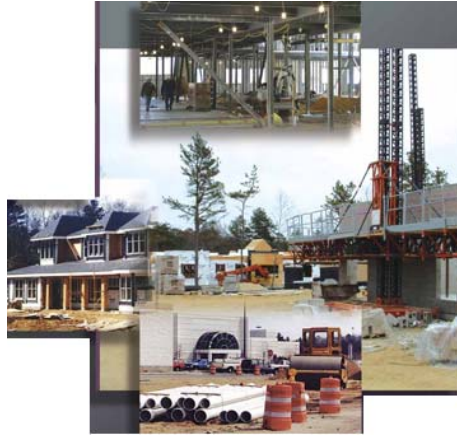


RMeans Light Commercial Cost Database

Primarily for light commercial construction costing less than \$1,000,000. Including the construction of retail stores, offices, warehouses, apartments, and motels.



Current unit costs for more than 12,000 components. Helps you price unfamiliar materials, spot-check subcontractor bids, compare costs and prepare final estimates.

Reliable price information about light commercial cost planning for adjusters, appraisers, architects, contractors, developers, planners, and project managers.

Up-to-date construction cost data for accurate estimating:

- New construction
- Repairs and Renovation
- Change orders

Costs broken down into:

- Materials
- Labor
- Equipment
- Overhead and Profit

An open-shop guide to estimating smaller, local-scale commercial construction. For spot-checking prices or estimating something unfamiliar, it's all you need.

Fine-tune your estimate, get "quick check" prices or prepare a reliable unit price estimate based on the latest "Means prices."

Organized according to the MasterFormat04 system of classification and numbering as developed by the **Construction Specifications Institute (CSI)** and the **Construction Specifications Canada (CSC)**.



2009 Count of unit cost lines by CSI division:

CSI Division	Count	CSI Division	Count
1-General Requirements	156	13-Special Construction	79
2-Existing Conditions	384	14-Conveying Equipment	12
3-Concrete	300	21-Fire Suppression	57
4-Masonry	445	22-Plumbing	719
5-Metals	773	23-HVAC	628
6-Wood, Plastics & Compos.	1,535	26-Electrical	1,056
7-Thermal & Moisture Protection	1,077	27-Communications	48
8-Openings	1,325	28-Elect. Safety & Sec.	42
9-Finishes	1,487	31-Earthwork	1,023
10-Specialties	458	32-Exterior Improvements	361
11-Equipment	223	33-Utilities	113
12-Furnishings	342	Total Lines	12,643